

DATA SHEETS

range
serie

ASTRA

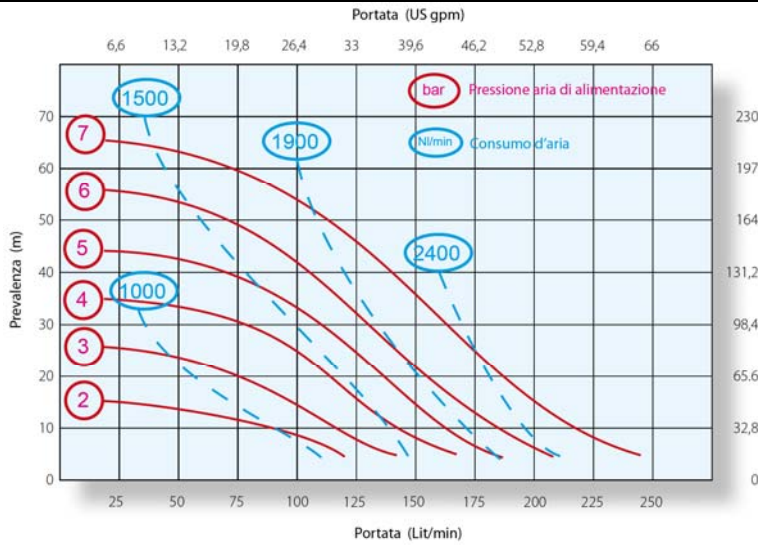
model
modello

125



TAB. **3351/B**

sheet 1/1



TECHNICAL DATA

Ratio 1:1

Maximum fluid working pressure: **7 bar**

Air pressure operating range: **2÷7 bar**

Maximum suction lift: **6 m**

Maximum size pumpable solids: **7,5 mm**

Air inlet size: **½" BSP**

Fluid inlet size: **1 ¼" BSP – 1¼" NPT**

Fluid outlet size: **1¼" BSP – 1¼" NPT**

Chambers material:

WR: **PP reinforced glass fibre**

WRX: **PP reinforced carbon fibre**

DF: **PVDF**

FC-FCX: **PVDF reinforced carbon fibre**

Diaphragms material:

Santoprene®

Keyflex®

Poliuretane

PTFE

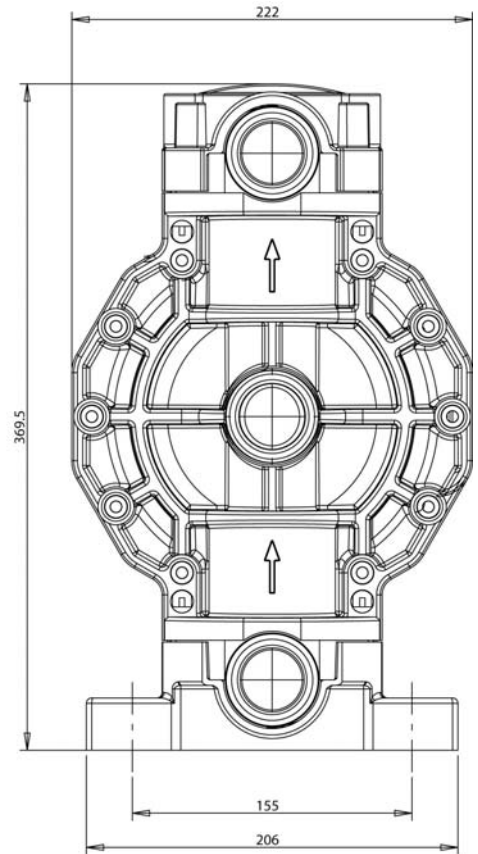
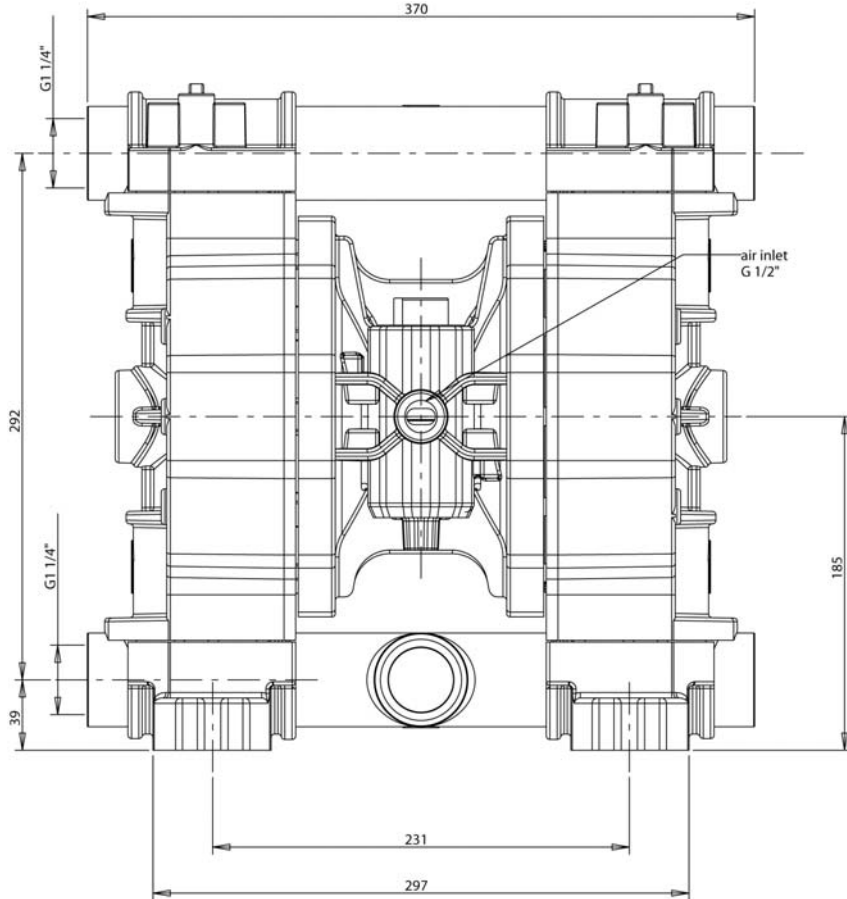
Weight: **15 Kg**

Performance based on water at ambient temperature

WR -FC-FCX- WRX II 3/3G D IIB T 135°C (zona 2)

WRX -FCX II 2/2G c IIB T 135°C (zona 1)

DIMENSIONAL DRAWING



Dimension in mm