

	Description		Mechanical specifications				Electrical specifications			
	Code	Type	rpm	Static moment* kgmm	Centrifugal force		Max input power W	Max. current A		
					kg	kN		12 V	24 V	
three-phase	600411	MVCC 3/100-MF	3000	12.0	120	11.9	5.0	100	8.0	4.0
	600428	MVCC 3/200-MF	3000	21.0	211	2.07	6.0	190	16.0	8.0
	600469	MVCC 3/500	3000	49.9	503	4.93	13.1	270	22.5	11.3
	600405	MVCC 3/1200	3600	78.0	1130	11.1	20.8	530	-	22.0
	600464	MVCC 3/1500	3600	105	1520	14.9	21.5	530	-	22.0

* Working moment = 2 x static moment.

Dimensional specifications (mm)

Fig.	A	B	C	Holes				F	H	I	L	M	N	P	Cable entry thread	
				D	E	øG	N°									
three-phase	MB	206	146.5	162	65-74**-80-115-135	140-106**-110-135-115	13-9-11-11-11	4	25	88	46	103	157	117	82	M20x1.5
	MB	263	146.5	162	65-74-80-115	140-106-110-135	13-9-11-13	4	25	88	46	103	140	117	82	M20x1.5
	A	288	203	167	105	140	13	4	30	82.5	65	145	140	160	-	M25x1.5
	A	308	214.5	205	120	170	17	4	45	93.5	63	168	160	182	-	M25x1.5
	A	308	214.5	205	120	170	17	4	45	93.5	63	168	160	182	-	M25x1.5

** Slot.

Fig. A

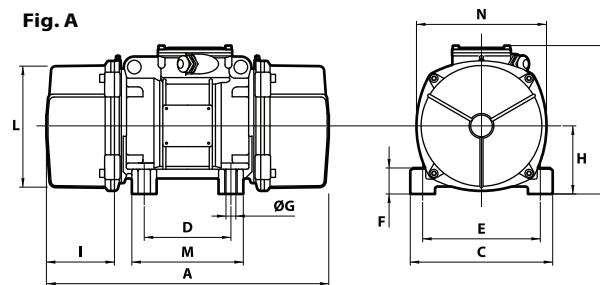


Fig. MB

